

DURA HOLD 2[®]

REF: Detail_DuraHold2_Outside Corner Construction

OUTSIDE CORNER BLOCK CUTTING DETAIL

DuraHold2 Outside Modified Corners

Imperial dimensions

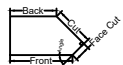
Angle [degrees]	Front [inches]	Back [inches]	Face Cut [inches]	Cut [inches]	Unit to Modify
5	36 5/8	36	5/8	14 1/8	Standard
10	37 1/4	36	1 1/4	14 1/8	Standard
15	37 7/8	36	1 7/8	14 1/8	Standard
20	38 1/2	36	2 1/2	14 1/8	Standard
25	39 1/8	36	3 1/8	14 1/8	Standard
30	39 7/8	36	3 3/4	14 1/8	Standard
35	40 1/2	36	4 1/2	14 1/8	Standard
40	41 1/8	36	5 1/8	14 1/8	Standard
45	31 1/4	25 3/8	5 7/8	14 1/8	90° corner*
50	31 1/8	24 5/8	6 5/8	14 1/8	90° corner*
55	31 1/4	23 7/8	7 3/8	14 1/8	90° corner*
60	31 3/8	23 1/8	8 1/8	14 1/8	90° corner*
65	31 5/8	22 5/8	9	14 1/8	90° corner*
70	32	22 1/8	9 7/8	14 1/8	90° corner*
75	32 5/8	21 3/4	10 7/8	14 1/8	90° corner*
80	33 3/8	21 1/2	11 7/8	14 1/8	90° corner*
85	34 1/4	21 3/8	13	14 1/8	90° corner*
90					Use manufactured 90° corner unit*
91-180					Not recommended

Metric dimensions

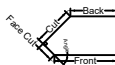
Angle [degrees]	Front [mm]	Back [mm]	Face Cut [mm]	Cut [mm]	Unit to Modify
5	931	915	16	360	Standard
10	946	915	31	360	Standard
15	962	915	47	360	Standard
20	978	915	63	360	Standard
25	995	915	80	360	Standard
30	1011	915	96	360	Standard
35	1029	915	114	360	Standard
40	1046	915	131	360	Standard
45	784	645	149	360	90° corner*
50	792	624	168	360	90° corner*
55	793	605	187	360	90° corner*
60	796	588	208	360	90° corner*
65	803	574	223	360	90° corner*
70	814	562	252	360	90° corner*
75	829	552	276	360	90° corner*
80	848	545	302	360	90° corner*
85	871	541	330	360	90° corner*
90					Use manufactured 90° corner unit*
91-180					Not recommended

*Note: The length of the 90° corner unit requires the running bond pattern to be corrected in adjacent units

Outside Right corner unit

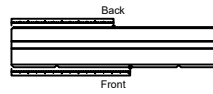


Outside Left corner unit

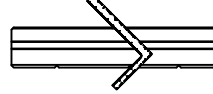


1. Create modified right corner unit using required unit.

a. Identify inside angle required. Mark corresponding Front and Back dimensions from left end of unit.

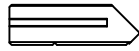


b. Mark Cut and Back Cut dimensions on square. Line up marks on square with marks on unit

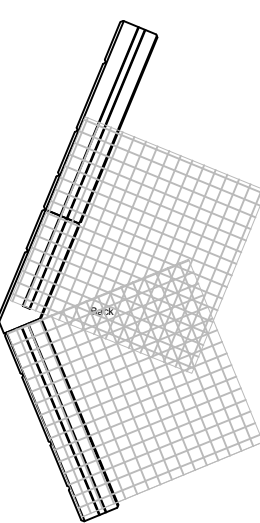


c. Scribe Cut and Back Cut lines on unit.
d. Use concrete saw to cut along Cut line.
e. Use concrete saw to cut along Back Cut line.

f. Use concrete saw to remove knob from the right end, leaving approximately 875mm (35 inches) of the key intact at the left side.

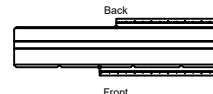


2. Place modified right corner unit on first course.

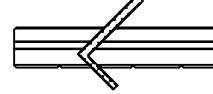


3. Create modified left corner unit using required unit.

a. Identify inside angle required. Mark corresponding Front and Back dimensions from right end of unit.

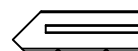


b. Mark Cut and Back Cut dimensions on square. Line up marks on square with marks on block

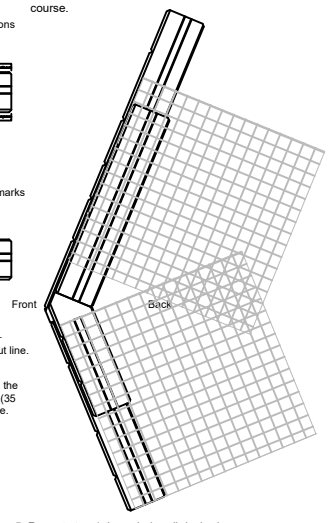


c. Scribe Cut and Back Cut lines on unit.
d. Use concrete saw to cut along Cut line.
e. Use concrete saw to cut along Back Cut line.

f. Use concrete saw to remove knob from the left end, leaving approximately 875mm (35 inches) of the key intact on the right side.



4. Place modified left corner unit on next course.



5. Repeat step 1 through 4 until desired height is achieved.



Engineering design by RisiStone Inc.

UNILOCK.COM | 1-800-UNILOCK

UNILOCK[®]
PAVERS & WALLS