

# BEACON HILL™ COPING

**UNILOCK®**

TECH SHEET

THICKNESS 60MM

REGION ONTARIO



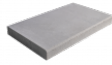
**UNILOCK®** Exclusive Technologies

ENDURACOLOR

**COLORS**

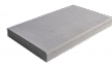
---

**FOSSIL**  
**FINISH: SMOOTH**  
**PREMIER**



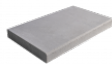
**COPING CHAMFERED**  
600mm x 60mm x 355mm  
23 5/8" x 2 3/8" x 14"

**GRANITE MIST**  
**FINISH: SMOOTH**  
**PREMIER**



**COPING CHAMFERED**  
600mm x 60mm x 355mm  
23 5/8" x 2 3/8" x 14"

**ALMOND GROVE**  
**FINISH: SMOOTH**  
**PREMIER**



**COPING CHAMFERED**  
600mm x 60mm x 355mm  
23 5/8" x 2 3/8" x 14"

**PACKAGING**

	COPING CHAMFERED	COPING BULLNOSE
UNIT THICKNESS (MM)	60	60
LAYERS PER BUNDLE	6	6
UNITS PER BUNDLE	24	24
UNITS PER LAYER	4	4
LBS PER BUNDLE	1,509.74	1,509.74
LBS PER LAYER	251.62	251.62
LBS PER UNIT	62.91	62.91

## INSTALLATION NOTES

---

Handling and Installation - Care must be taken to avoid tossing stones so that they bang against each other. Damage to the surface appearance can happen if handled too rough.

Adhesives – Any concrete adhesive from your hardscape or building supplier. Units can be mortared in, but concrete adhesives are always stronger.

Joint compounds – Use any quality exterior latex joint caulking. Be sure to space units apart ¼". For mortar joints, space units apart approximately 3/8" to ½".

Cleaners – Use any concrete cleaner approved for use on paving stone. Follow manufacturer's dilution rates and application procedures. Always test in a small area to ensure desired results before cleaning entire area.

### Sealers

Product may be sealed but it is not absolutely required

Use any concrete cleaner approved for use on paving stone. Select type for desired sheen. To minimize the possibility of slipping, avoid high gloss for steps and pool coping

NOTE: Always clean surface with a paver cleaner prior to sealing.

---

Contact Unilock Representative for actual color samples and availability. Unilock reserves the right to change product information without notice.

PDF Generated November 19, 2024, 8:12 am

UNILOCK