

# URBAN™ ALLURE

**UNILOCK**

TECH SHEET

**THICKNESS** 60MM

**REGION** ONTARIO

IMAGE  
UNAVAILABLE

Please contact your  
Unilock  
Representative for  
assistance.

IMAGE  
UNAVAILABLE



**EDGE**  
ROUNDED BEVEL EDGE

IMAGE  
UNAVAILABLE

Please contact your  
Unilock  
Representative for  
assistance.

**UNILOCK** Exclusive Technologies

ENDURACOLOR

EASYCLEAN™

COMFORT STEP

## APPLICATIONS

Note: Not all sizes are suitable for every application. Contact Unilock Representative for assistance.

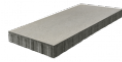


### Patio & Walkway

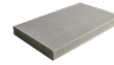
## COLORS

### LINEN GREY

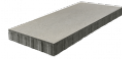
FINISH: SMOOTH PREMIER



**18"X36"**  
450mm x 900mm x 60mm  
17 3/4" x 35 1/2" x 2 3/8"



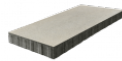
**COPING CHAMFERED**  
900mm x 60mm x 485mm  
35 1/2" x 2 3/8" x 19"



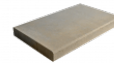
**18"X24"**  
450mm x 600mm x 60mm  
17 3/4" x 23 5/8" x 2 3/8"

### LINEN BUFF

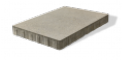
FINISH: SMOOTH PREMIER



**18"X36"**  
450mm x 900mm x 60mm  
17 3/4" x 35 1/2" x 2 3/8"



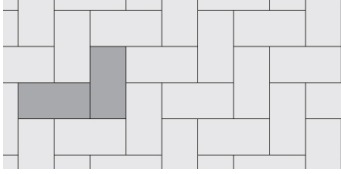
**COPING CHAMFERED**  
900mm x 60mm x 485mm  
35 1/2" x 2 3/8" x 19"



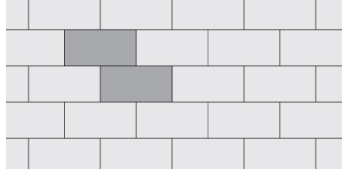
**18"X24"**  
450mm x 600mm x 60mm  
17 3/4" x 23 5/8" x 2 3/8"

JOINT SPACING = 4MM

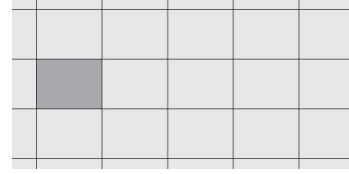
**LAYING PATTERNS**



LP URBANALLURE 18X36 HB C.



LP URBANALLURE 18X36 RB D



LP URBANALLURE 18X24 SB B

**TYPICAL CROSS SECTION**

Note: Base, screed bed, infill aggregates and or reinforcements may vary based on project requirements or as specified by engineer.



**PACKAGING**

	18"X36"	COPING CHAMFERED	COPING BULLNOSE	18"X24"
UNIT THICKNESS (MM)	60	60	60	60
LAYERS PER BUNDLE	6	6	6	8
SQ FT PER BUNDLE	52.31	93	-	-
SQ FT PER LAYER	8.72	11.63	-	-
SQ FT PER UNIT	4.36	2.91	-	-
UNITS PER BUNDLE	12	24	12	32
UNITS PER LAYER	2	4	2	4
LIN FT PER BUNDLE - SOLDIER	35.44	47.25	-	-
LIN FT PER LAYER - SOLDIER	5.91	5.91	-	-
LIN FT PER UNIT - SOLDIER	2.95	1.48	-	-
LIN FT PER BUNDLE - SAILOR	70.87	35.46	35.46	62.99
LIN FT PER LAYER - SAILOR	11.81	5.91	5.91	7.87
LBS PER BUNDLE	1,739.30	1,547.40	1,547.40	2,552.39
LBS PER LAYER	289.88	257.90	257.90	319.05
LBS PER UNIT	144.94	64.48	128.95	79.76

## INSTALLATION NOTES

---

### URBAN™ ALLURE

Urban Line pavers are wide-format pavers manufactured at only 2 3/8" (60mm) thick. This allows for easier installation of non-vehicular applications in urban areas where access or space is limited. Urban Line pavers are made with EnduraColor™, for optimal color vibrancy and longevity.

Recommended Base Stabilization – one layer of DriveGrid™ stabilization grid between subgrade and base material. Recommended depth 8" to 10" below pavers for maximum stability and performance. Use under Standard Base or Permeable Base.

Standard Base – Min. 6" – 8" of ¾" Crushed gravel (any road base standard in accordance with ASTM-D2940) compacted to 98% Standard Proctor Density (SPD).

Standard Bedding Course – 1" thick of coarse sand– in accordance with ASTM-D2940 screeded over base.

Alternative Permeable Base – Min. 6" – 8" of ¾" clear open-graded stone compacted to achieve full particle lock-up and consolidation. (Note: Clear open-graded does not compact but does consolidate slightly by vibrating the particles together.)

Alternative Permeable Bedding Course – 1" thick of frac14;" clear open-graded chip stone – (ASTM No. 8) screeded over base.

Special Note: Concrete Direct Overlay – In some areas of the country and in some applications, pavers are very successfully placed directly over concrete. Concrete as a base is in itself quite strong, but it can affect the structural integrity of the paver particularly in vehicular applications, where the concrete below is sub-par. The following considerations must be taken into account to insure that the concrete below the surface is ideal:

1. Concrete integrity – concrete must be in good condition, and not crumbling
2. Drainage slope – concrete below must be sloped away from all buildings and structures
3. Drainage holes – In lowest areas of the concrete, drill 1" holes in concrete (on 12" centers) and fill holes with ¼" chip (ASTM No. 8)
4. Base drainage - the area below the concrete must not be subject to frost movement
5. Surface - surface must be totally smooth and flat equivalent to the desired finished surface
6. Waterproofing - may be required when installing pavers over concrete where there is a basement or cold cellar below. Install an impervious rubber membrane over the surface prior to installing any pavers over the surface.
7. Jointing Sand - Use an impervious polymeric sand when installing over concrete

### Jointing Material and Joint Stabilization

All sands must meet ASTM C144 or C33 Specifications. For best appearance and optimal performance, keep jointing materials approximately 1/8" below the chamfer (bevel edge) of the paver.

Good Option: Ordinary sharp jointing sand in accordance with ASTM C144 or C33. (Common name: Concrete Sand) Important Information (Will update to the same Product Family)

Best Option 1: Any polymeric sand or resin-based joint sand . Always follow manufacturer's specifications and requirements.

Best Option 2: Ordinary clean concrete sand stabilized with a water-based or solvent-based joint sand stabilizer sealer. Always follow sealer manufacturer's application specifications and requirements.

Handling – This product is large format and should be installed using a suction lifting device. Do not let units bang against each other when handling as chipping may occur.

Edge Restraint - Install an edge restraint around the perimeter of any pavers not restrained by existing concrete edges and/or building structures. Spike-in edge restraints come in plastic and metal and work well for most applications. A concrete curb or a sub-surface concrete wedge can also be installed to retain the edge.

Paver Compaction - Only use a rubber-roller compactor for the final compaction.

Cleaners – Any cleaner specifically designed for pavers may be used for color restoration or general cleaning. Follow manufacturer's dilution rates and application procedures. Always test a small area to make sure the results are as expected.

### Sealers

- Product may be sealed for aesthetic or cleanliness reasons but it is not required
- Use any sealer approved for concrete pavers
- Select type for desired aesthetics
- Product must be cleaned before sealing
- Always read and follow manufacturer's application procedures
- Always test a small area to make sure the results are as expected

Note: The Americans with Disabilities Act Accessibility Guidelines (ADAAG) provides measurable criteria to determine compliance, not individual product evaluation. Gaps, joints or openings, greater than ½" horizontal and ¼" vertical should be avoided as they can disrupt wheelchair maneuvering (United States Access Board – Guidelines and Standards).

---

Contact Unilock Representative for actual color samples and availability. Unilock reserves the right to change product information without notice.

PDF Generated November 19, 2024, 8:12 am

